



B-WAVE

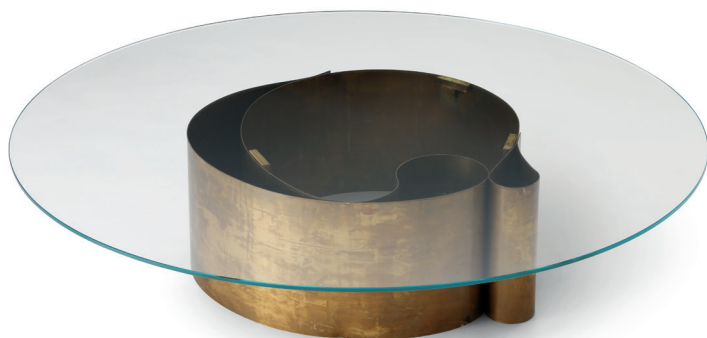
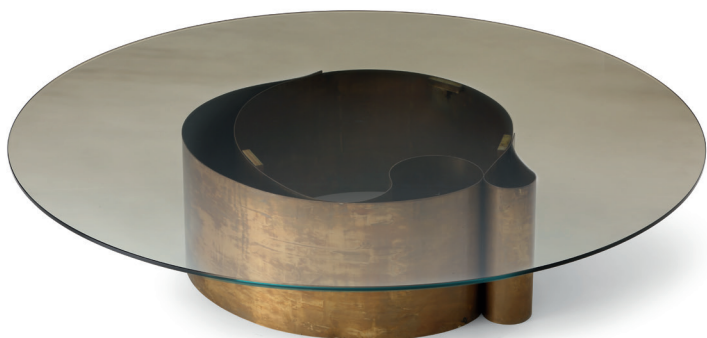
COFFEE TABLE

design Massimo Castagna 2018

This table is characterized by the artistic base shaped by master craftsmen. The burnished brass sheeting used in its production is folded back on itself to create an eye-catching circular sculptural motif. The large round top, available in extra-clear or bronze glass, expresses its soul and emphasizes the important aesthetics.



LA CULTURA DEL DORMIRE.



B-WAVE - COFFEE TABLE
design Massimo Castagna 2018

OUTER SIZES

